

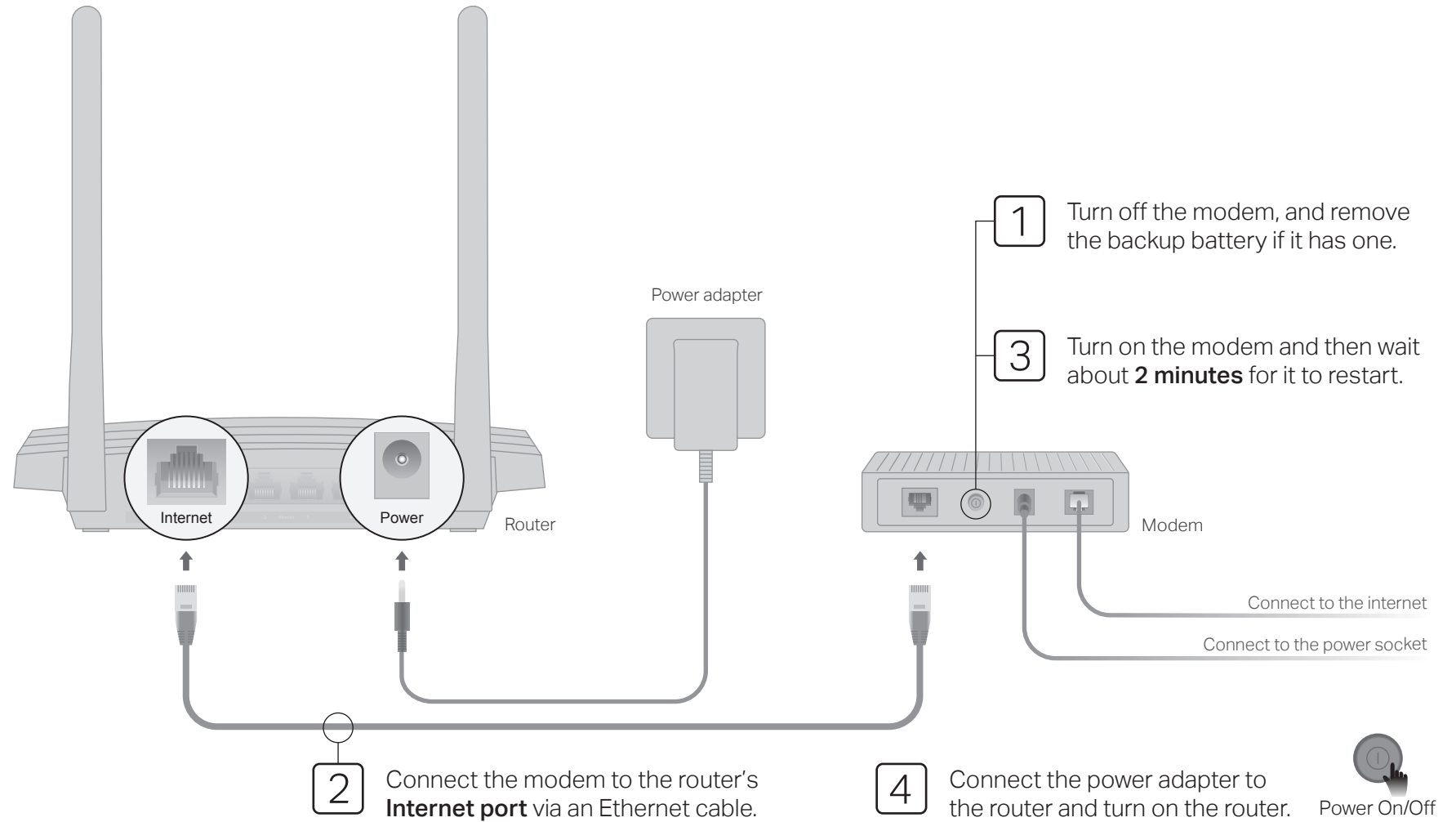
Quick Installation Guide

Wireless Dual Band Router

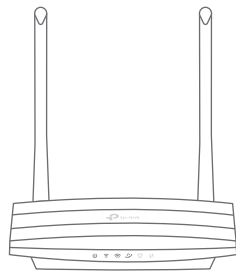
Images may differ from actual products.

Router Mode

If your internet connection is through an Ethernet cable directly from the wall instead of through a DSL / Cable / Satellite modem, connect the Ethernet cable to the router's Internet port, then follow step 4 and 5 to complete the hardware connection.



5 Verify that the following LEDs stay solid on to confirm the hardware is connected correctly.



Note: If the 2.4GHz LED and 5GHz LED are off, press and hold the WPS/Wi-Fi button on the rear panel for about 3 seconds, then release the button. Both LEDs will turn on.

6 Configure the router

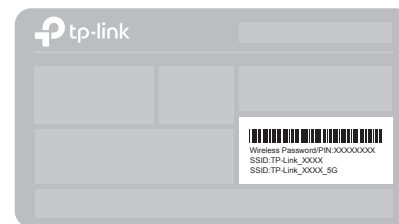
1. Connect your computer to the router (Wired or Wireless)

Wired

Turn off the Wi-Fi on your computer and connect it to the router via an Ethernet cable.

Wireless

Connect your device to the router's Wi-Fi using the SSID (network name) and Wireless Password printed on the label at the bottom of the router.



2. Launch a web browser, and enter <http://tplinkwifi.net> or <http://192.168.0.1> in the address bar. Use **admin** for both username and password to log in.

Note: If the login window does not appear, please refer to FAQ > Q1.

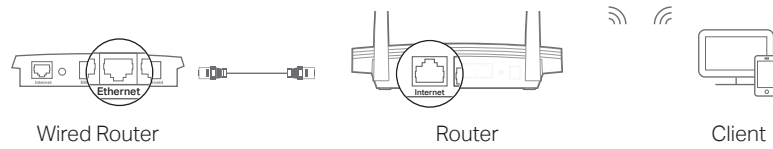


3. Run the Quick Setup, select **Wireless Router** and follow the step-by-step instructions to set up the internet connection.

Enjoy the internet!

Access Point Mode

In this mode, the router transforms your existing wired network to a wireless one.



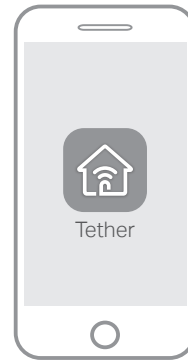
- A. Power on the router.
- B. Connect the router's Internet port to your wired router's Ethernet port via an Ethernet cable as shown above.
- C. Connect a computer to the router via an Ethernet cable or wirelessly by using the **SSID** (network name) and **Wireless Password** printed on the label at the bottom of the router.
- D. Launch a web browser and enter <http://tplinkwifi.net> in the address bar. Use **admin** for both the username and password to log in.
- E. Run the **Quick Setup**, select **Access Point** and follow the step-by-step instructions of the Quick Setup to set up the internet connection.





Enjoy the internet!

Connect to the wireless network by using the **SSID** (network name) and **password** of the router.

Tether App

TP-Link Tether app provides a simple, intuitive way to access and manage your router.



-  Block unwelcome users from connecting to your network
-  Change the basic wireless network settings
-  View information about clients connected to your router
-  Set up Parental Controls with access time

How to begin?

1. Download the TP-Link Tether app from the Apple App Store or Google Play, or simply scan the QR code.
2. Ensure your smart device is wirelessly connected to the home network.
3. Launch the Tether app and start managing your home network.



Button Explanation

BUTTON	DESCRIPTION
WPS/Wi-Fi	Press and hold for 1 second to enable the WPS function. Press and hold for about 3 seconds to turn on or off the wireless function of the router.
Reset	Press and hold this button for about 2 seconds until all LEDs turn off to reset the router to its factory default settings.

More Features

The TP-Link router supports various features, including Guest Network, Parental Controls, Access Control and more. You can log in to the router's web management page at <http://tplinkwifi.net> to configure these functions. For instructions, please refer to the user guide at <http://www.tp-link.com>.

Support

For technical support, the user guide and more information, please visit <http://www.tp-link.com/support>, or simply scan the QR code.



FAQ (Frequently Asked Questions)

Q1. What can I do if the login window does not appear?

- A1. If the computer is set to a static or fixed IP address, change the setting to obtain an IP address automatically.
- A2. Verify that <http://tplinkwifi.net> is correctly entered in the web browser. Alternatively, enter <http://192.168.0.1> or <http://192.168.1.1> in the web browser and press **Enter**.
- A3. Use another web browser and try again.
- A4. Reboot your router and try again.
- A5. Disable then re-enable the network adapter being used.

Q2. What can I do if I cannot access the internet?

- A1. Check if the internet is working properly by connecting a computer directly to the modem using an Ethernet cable. If it is not, contact your internet service provider.

A2. Log in to the web management page of the router, and go to the **Status** page to check whether the WAN IP address is valid or not. If it is, please run the Quick Setup again; otherwise, recheck the hardware connection.

- A3. For cable modem users, log in to the web management page of the router. Go to **Network > MAC Clone**, click **Clone MAC Address** and click **Save**, then reboot both the modem and the router.
- A4. Reboot your router and try again.

Q3. How do I restore the router to its factory default settings?

- A1. While the router is powered on, press and hold the **Reset** button on the rear panel of the router for about 2 seconds until all LEDs turn off, then release the button.
- A2. Log in to the web management page of the router. Go to **System Tools > Factory Defaults**, click **Restore**. The router will restore and reboot automatically.

Q4. What can I do if I forgot my web management password?

- A. Refer to FAQ > Q3 to reset the router, and then use **admin** (all lowercase) for both username and password to log in.

Q5. What can I do if I forgot my wireless network password?

- A1. The factory default Wireless Password/PIN is printed on the product label of the router.
- A2. Connect a computer to the router via an Ethernet cable. Log in to the router's web management page, and go to **Wireless 2.4GHz** (or **Wireless 5GHz**) > **Wireless Security** to obtain or reset your wireless password.